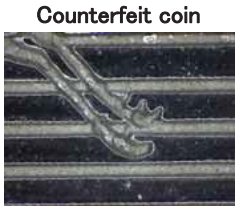


Features of Counterfeit Coins of the 60th Year of the Emperor on the Throne 10,000 Yen Silver Coin

(Obverse)



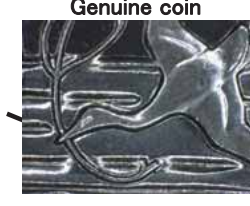
On the counterfeit coin, the line representing the auspicious cloud near the toes of the auspicious bird is not split.



On the counterfeit coin, there are distinct spaces between the lines representing the auspicious cloud.



On the counterfeit coin, there are distinct spaces between the ends of the lines representing the auspicious cloud.



On the counterfeit coin, the lines representing the auspicious cloud beneath the bird are not split.



On the counterfeit coin, the decorative patterns are planar and whitish.

Features of Counterfeit Coins of the 60th Year of the Emperor on the Throne 10,000 Yen Silver Coin

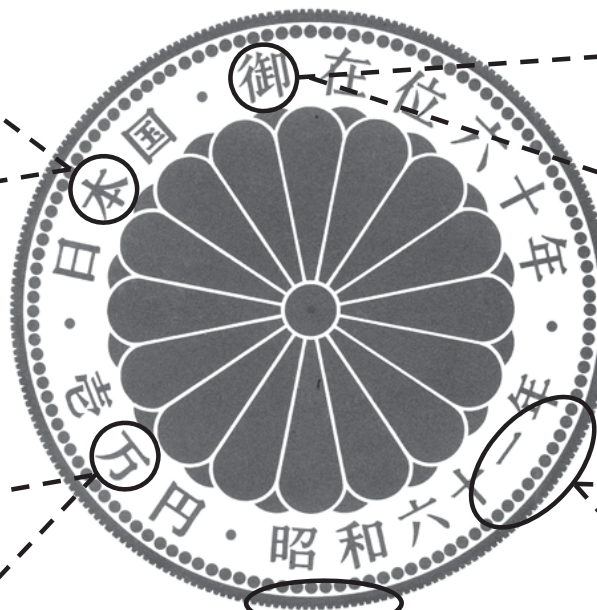
(Reverse)



On the counterfeit coin, the horizontal line at the bottom center of the character touches both the strokes on the left and right.



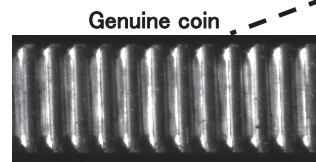
On the counterfeit coin, the lines of the characters are thicker and the spaces between the strokes are smaller.



On the counterfeit coin, the lines of the characters are thicker and have rounded ends.



On the counterfeit coin, the pearl-like dots are larger and the hem is wider.



The counterfeit coin has fewer ridges on the edge.