

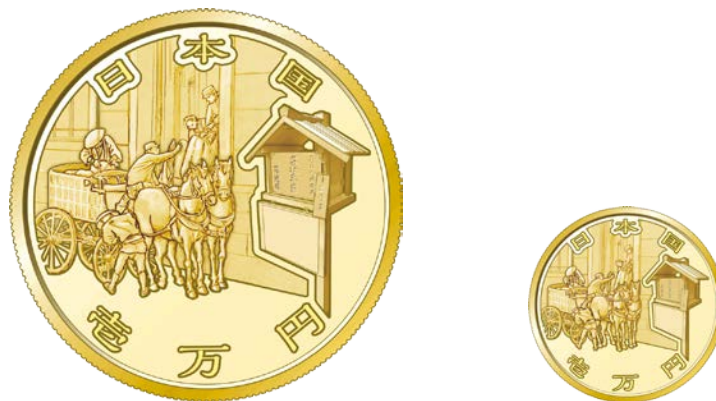
(Reference 1)

## Commemorative Coins for the 150th Anniversary of Postal System

### Design explanation of 10,000-yen gold coin

Obverse (double the actual size) \* Actual size: 26 mm in diameter

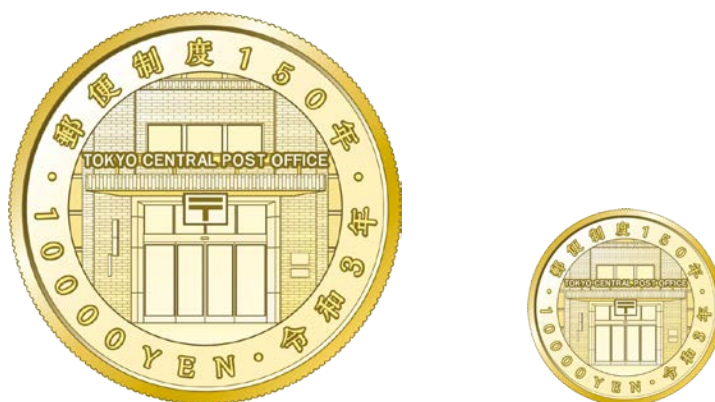
Letter collection box (Japan's first mailbox) and a work scene of mail being loaded



- The coin is designed with an image of a letter collection box (Japan's first mailbox) and a work scene of mail being loaded in the Meiji era. The design is based on Postal On-site Picture Scroll 6, which was drawn around the 1890s.

Reverse (double the actual size)

Entrance to the former Tokyo Central Post Office



- The coin is designed with an image of the entrance to the former Tokyo Central Post Office.

(Reference 2)

## Commemorative Coins for the 150th Anniversary of Postal System

### Design explanation of 1,000-yen silver coin

Obverse (1.5 times the actual size) \* Actual size: 40 mm in diameter

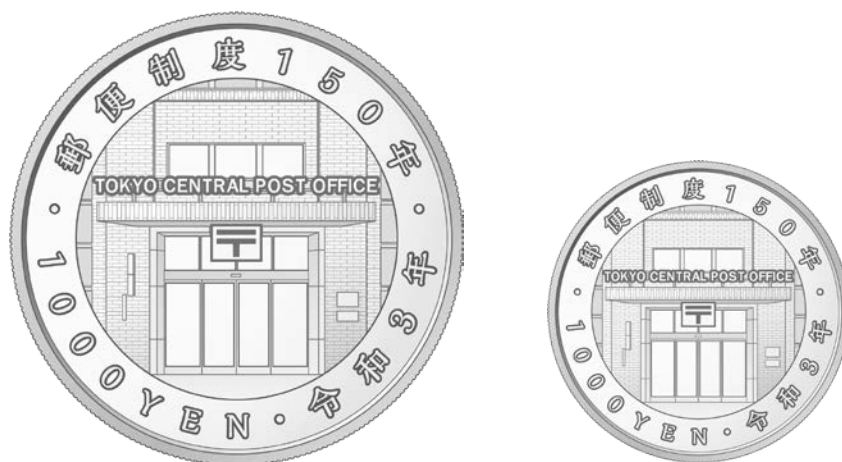
Mailbox No. 1 (round-shaped) and a work scene of mail being loaded



- The coin is designed with an image of the No. 1 round-shaped mailbox put into practical use in 1949 and a work scene of mail being loaded in the Meiji era. The design is based on Postal On-site Picture Scroll 6, which was drawn around the 1890s.

Reverse (1.5 times the actual size)

Entrance to the former Tokyo Central Post Office



- The coin is designed with an image of the entrance to the former Tokyo Central Post Office.

(Reference 3)

## Commemorative Coins for the 150th Anniversary of Modern Currency System

### Design explanation of 10,000-yen gold coin

Obverse (double the actual size) \* Actual size: 26 mm in diameter

The character “圓 (yen)” with a chrysanthemum and paulownia



- The coin bears the character “圓 (yen),” designed for gold coins issued in 1871, with a chrysanthemum and a paulownia on the reverse side.

Reverse (double the actual size)

Design combining those of the current regular currency  
(six types)



- The design combines those of the current regular coins (six coins), i.e., a paulownia, cherry blossom, chrysanthemum, the Byodoin Phoenix Hall, rice ears, and sapling.

(Reference 4)

## Commemorative Coins for the 150th Anniversary of Modern Currency System

### Design explanation of 5,000-yen gold coin

Obverse (double the actual size) \* Actual size: 20 mm in diameter

The character “圓 (yen)” with a chrysanthemum and paulownia



- The coin bears the character “圓 (yen),” designed for gold coins issued in 1871, with a chrysanthemum and a paulownia on the reverse side.

Reverse (double the actual size)

Design combining those of the current regular currency  
(six types)



- The design combines those of the current regular coins (six coins), i.e., a paulownia, cherry blossom, chrysanthemum, the Byodoin Phoenix Hall, rice ears, and sapling.

(Reference 5)

## Commemorative Coins for the 150th Anniversary of Modern Currency System

### Design explanation of 1,000-yen silver coin

Obverse (1.5 times the actual size) \* Actual size: 40 mm in diameter

The character “圓 (yen)” with a chrysanthemum and paulownia



- The coin bears the character “圓 (yen),” designed for gold coins issued in 1871, with a chrysanthemum and a paulownia on the reverse side.

Reverse (1.5 times the actual size)

Design combining those of the current regular currency (six types)



- The design combines those of the current regular coins (six coins), i.e., a paulownia, cherry blossom, chrysanthemum, the Byodoin Phoenix Hall, rice ears, and sapling.